



Table of Contents

Connecting to WSB-NLU Virtual Lab.....	2
Username and password.....	2
Virtual Lab Web Client.....	3
Important information.....	3
File Management.....	4
Where are files stored?.....	4
Uploading files example.....	4
Your remote personal profile.....	5
Sharing files from your device.....	6
Video Tutorial - moving your files.....	6
Remote connection to WSB-NLU laboratory.....	7
Connecting to C117 <i>Workstation</i>	7
Workstation info.....	8
Contact and technical support.....	9



Connecting to WSB-NLU Virtual Lab

Virtual Lab is available as HTML5 client that should work on any modern web browser.

Username and password

Virtual Lab requires valid CloudA login information in the following format:

clouda\LOGIN

PASSWORD

Before reporting issues with Virtual Lab, please verify that you can login into CloudA at (<https://wsb-nlu.clouda.edu.pl/>)

Virtual Lab is available at (<https://vlab.wsb-nlu.edu.pl/RDWeb/webclient/>)

•••••
Loading...

Sign in

User name
clouda\LOGIN

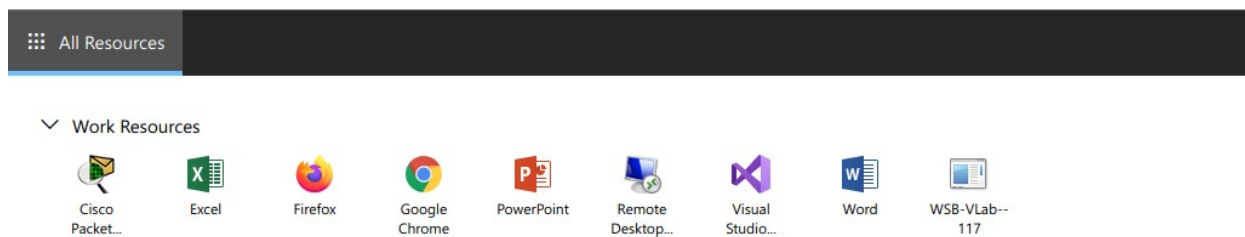
Password
••••••••••••••••••••

[Privacy policy](#) [Sign in](#)

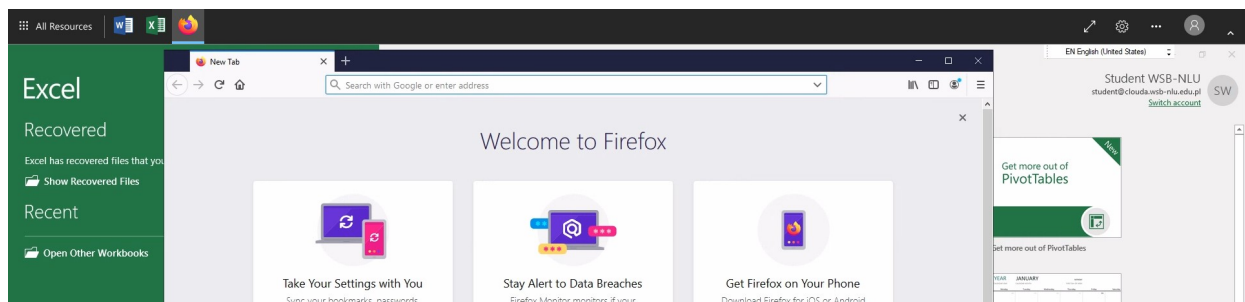


Virtual Lab Web Client

Selecting an application from the list will launch it directly in your browser.



You can launch multiple applications this way.



Important information

Every remote application launched from any version of Virtual Lab will not have access to your device or disk space. All saved files will be stored on the server. **You will not be able to access them after closing remote application.**

Please refer to „File Management” for more information.



File Management

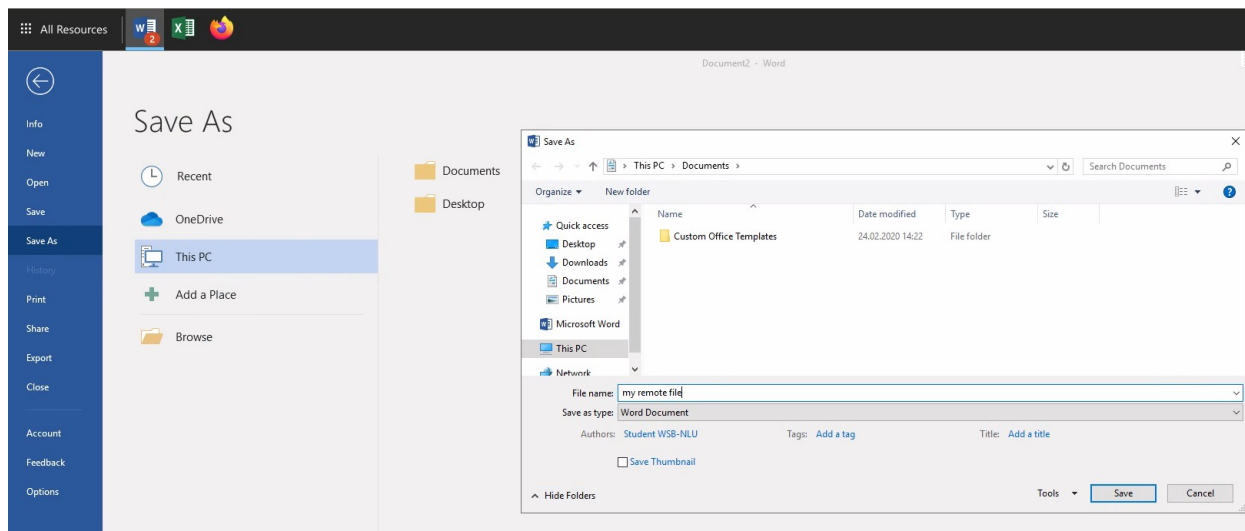
Since remote applications are run on server, you cannot save files to your device directly.

Where are files stored?

All saved files are stored in your remote personal profile on Virtual Lab server and every other remote application can access them. You can use **remote web browser** to upload your files to CloudA or other cloud storage like Google Drive or OneDrive.

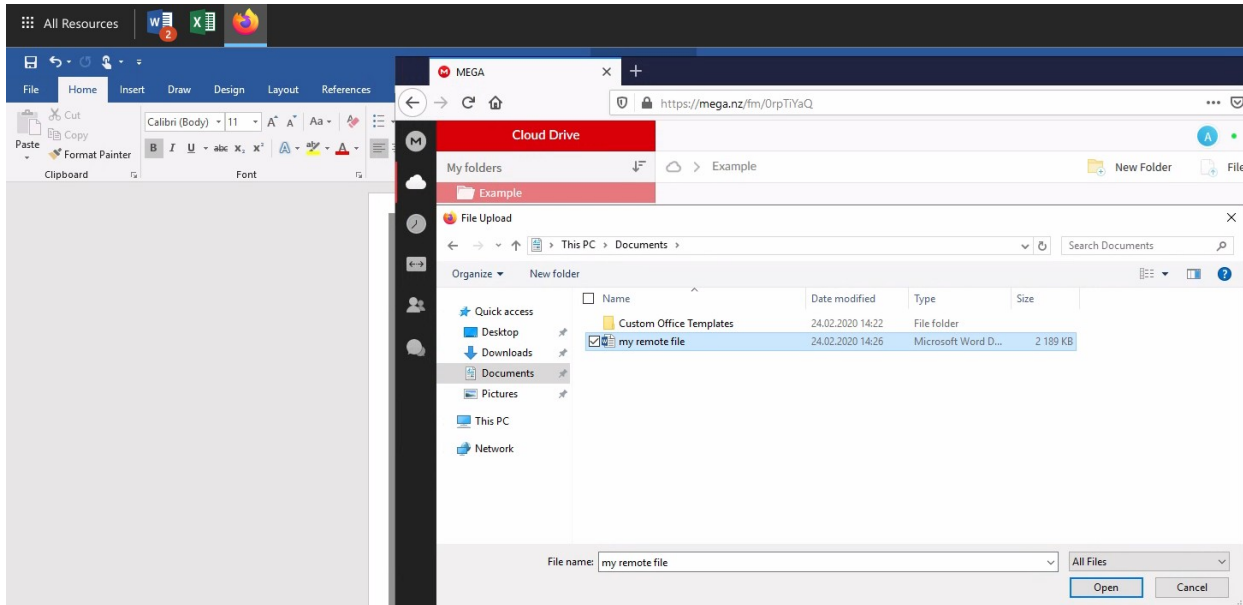
Uploading files example

1. Save your work to Desktop or Documents folder.





2. Open a remote web browser, then visit CloudA or any file upload service or cloud storage



Your remote personal profile

This profile and all saved files are only available to you. It is shared between all Virtual Lab applications no matter the connection type you choose.



Sharing files from your device

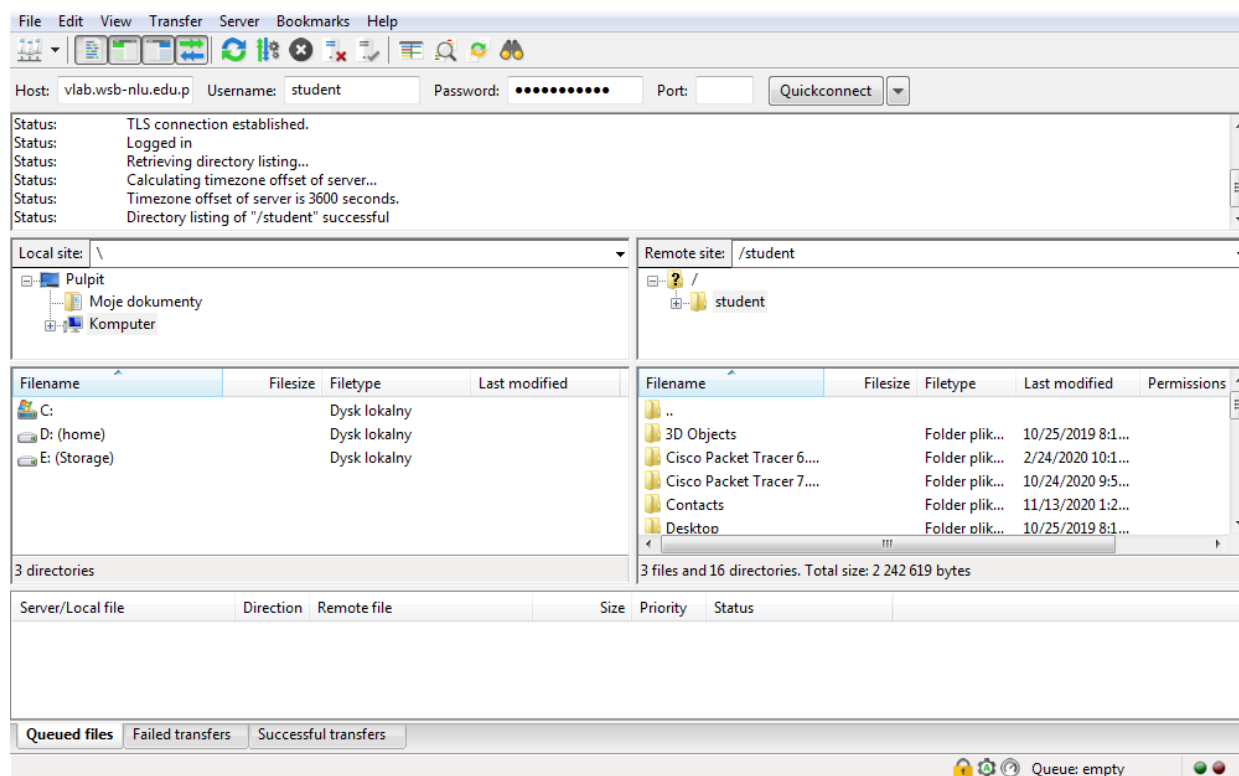
You can share files directly between Virtual Laboratory and your device using FTP protocol.

You can use any FTP client, or download portable version of FileZilla from (<https://itcloud.wsb-nlu.edu.pl/s/pNJJwF9twqgAqx9>).

Host: vlab.wsb-nlu.edu.pl

Username: your CloudA login

Password: your CloudA password



Video Tutorial – moving your files

Viedo tutorial can be watched online at (<https://itcloud.wsb-nlu.edu.pl/s/4eGk3ieHoRK75RZ>)

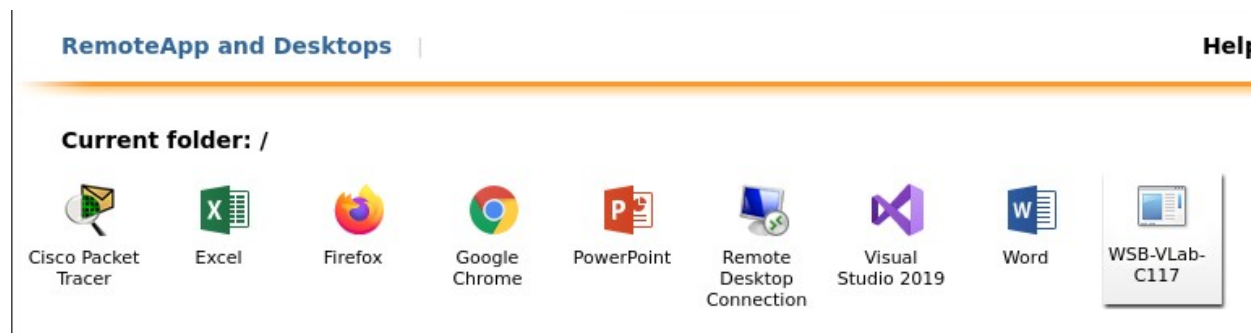


Remote connection to WSB-NLU laboratory

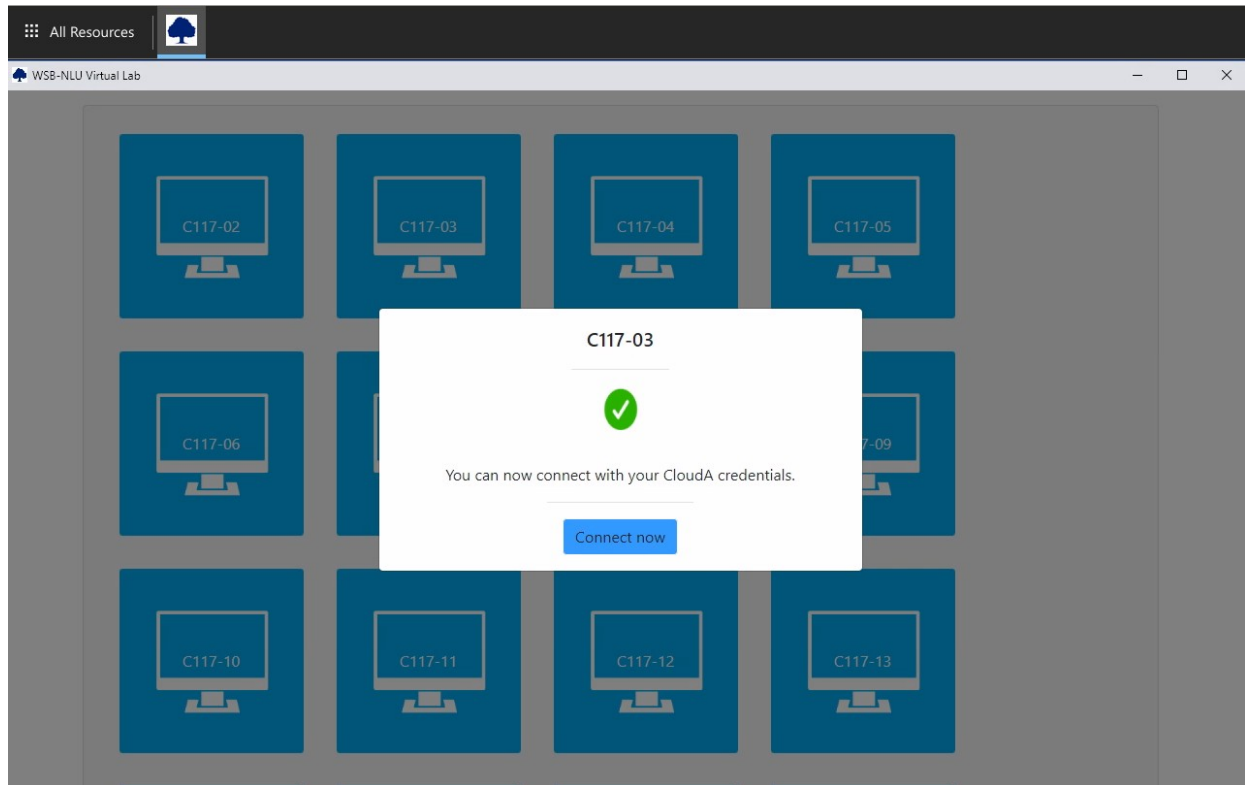
It is possible to connect remotely to workstations from WSB-NLU Laboratory C117 during your scheduled lectures.

Connecting to C117 Workstation

From the list of remote applications, select „WSB-VLab-C117”



You will be able to pick one of the workstations. Please note that selecting a workstation will power up a PC in classroom, it may take few minutes before you will be able to connect.



When workstation has finished waking up, you will be able to connect to it directly.

Workstation info

You will login into the same profile you normally would with physical access to the workstation. All your files and software that is available in C117 can be launched remotely.



Contact and technical support

Virtual Laboratories are maintained and developed by IT Department of WSB-NLU in Nowy Sącz.

If you have any questions or need a technical support, you can contact us via:

e-mail: administrator@wsb-nlu.edu.pl

phone: +48 18 44 99 140

+48 18 44 99 141

+48 18 44 99 142

ul. Zielona 27, 33-300 Nowy Sącz, pok. C110